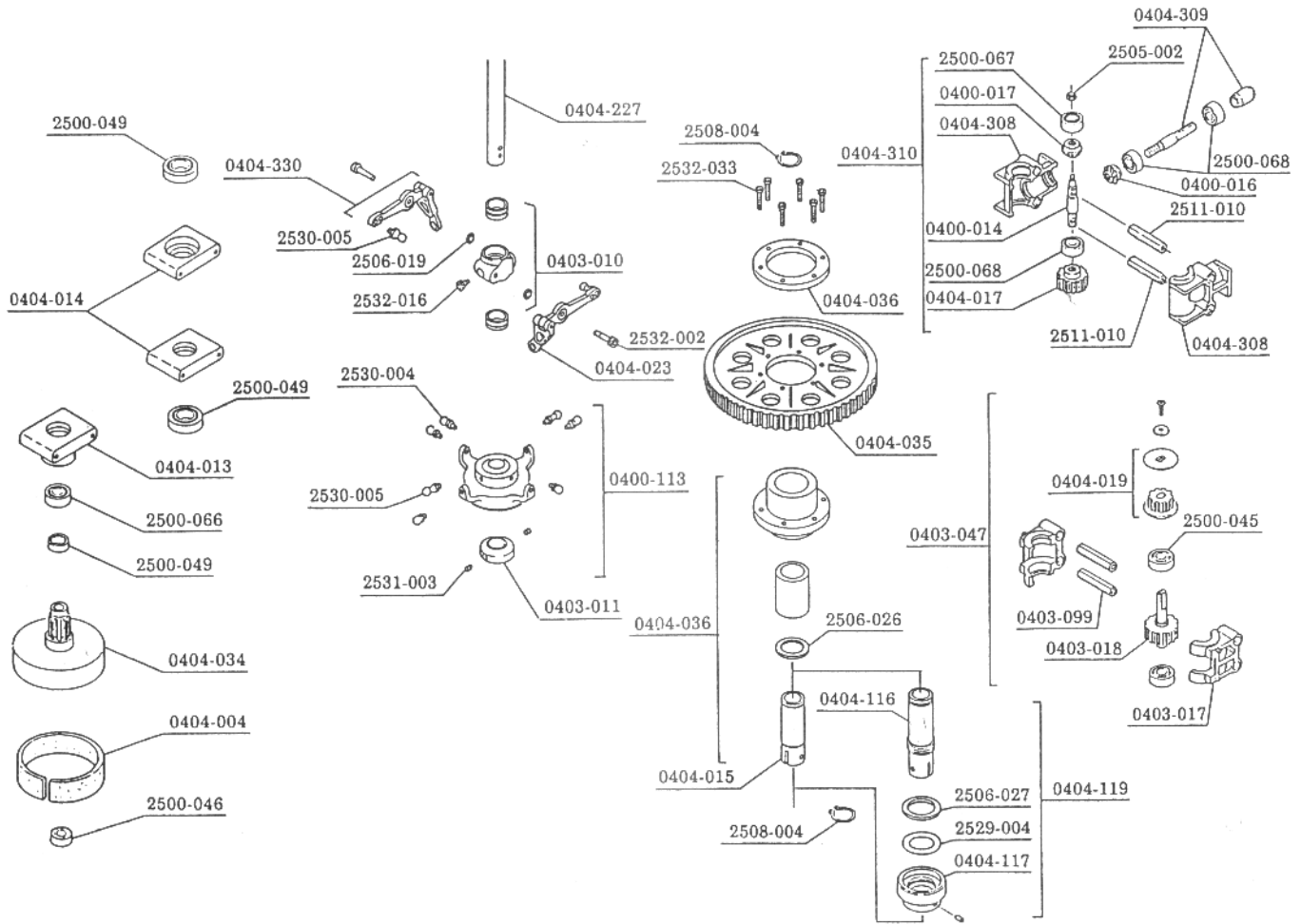
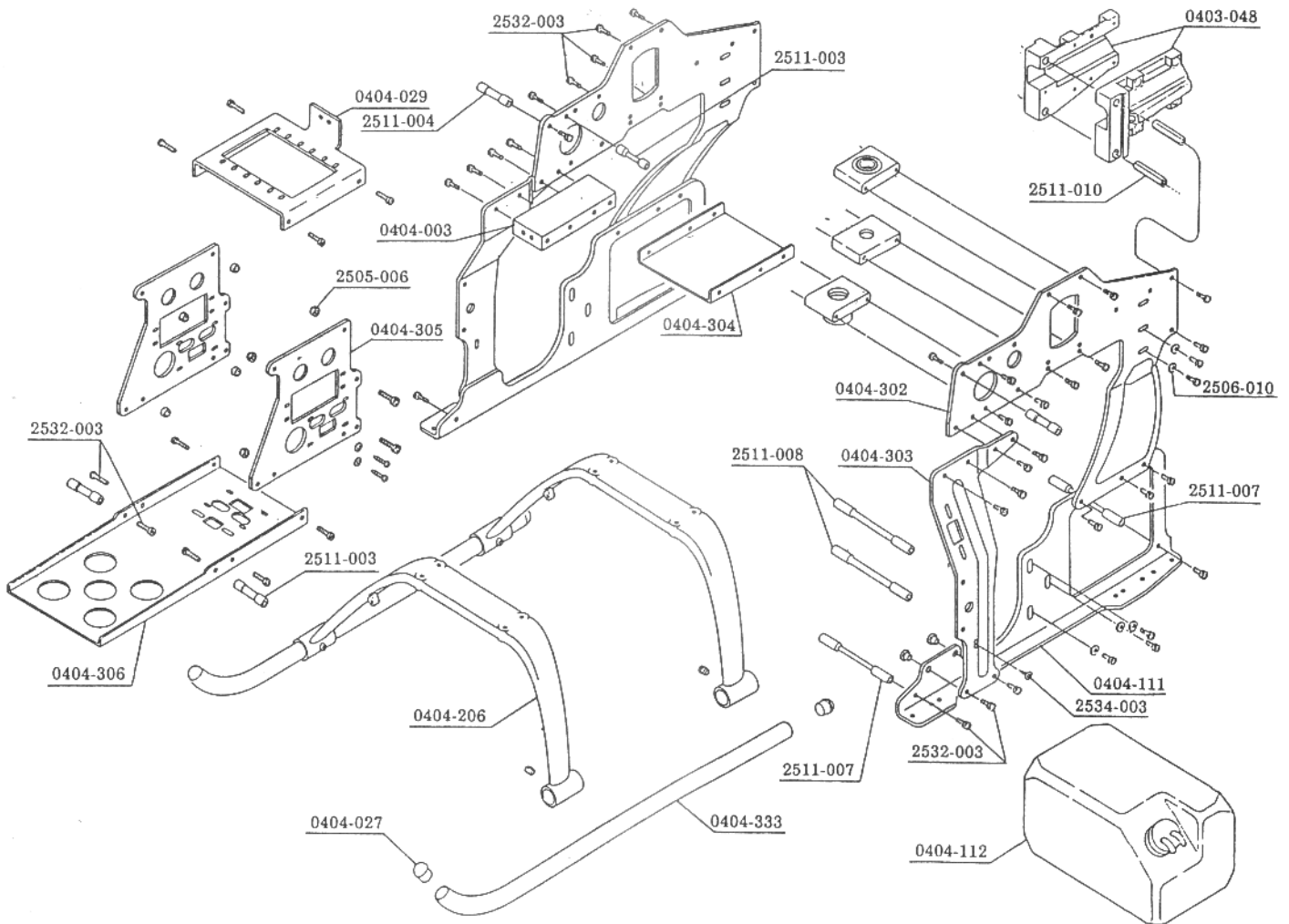


◎ : Standard equipped  
 ○ : Single part, inter changeable without machining  
 △ : More than two parts are needed. Further machining may be needed.

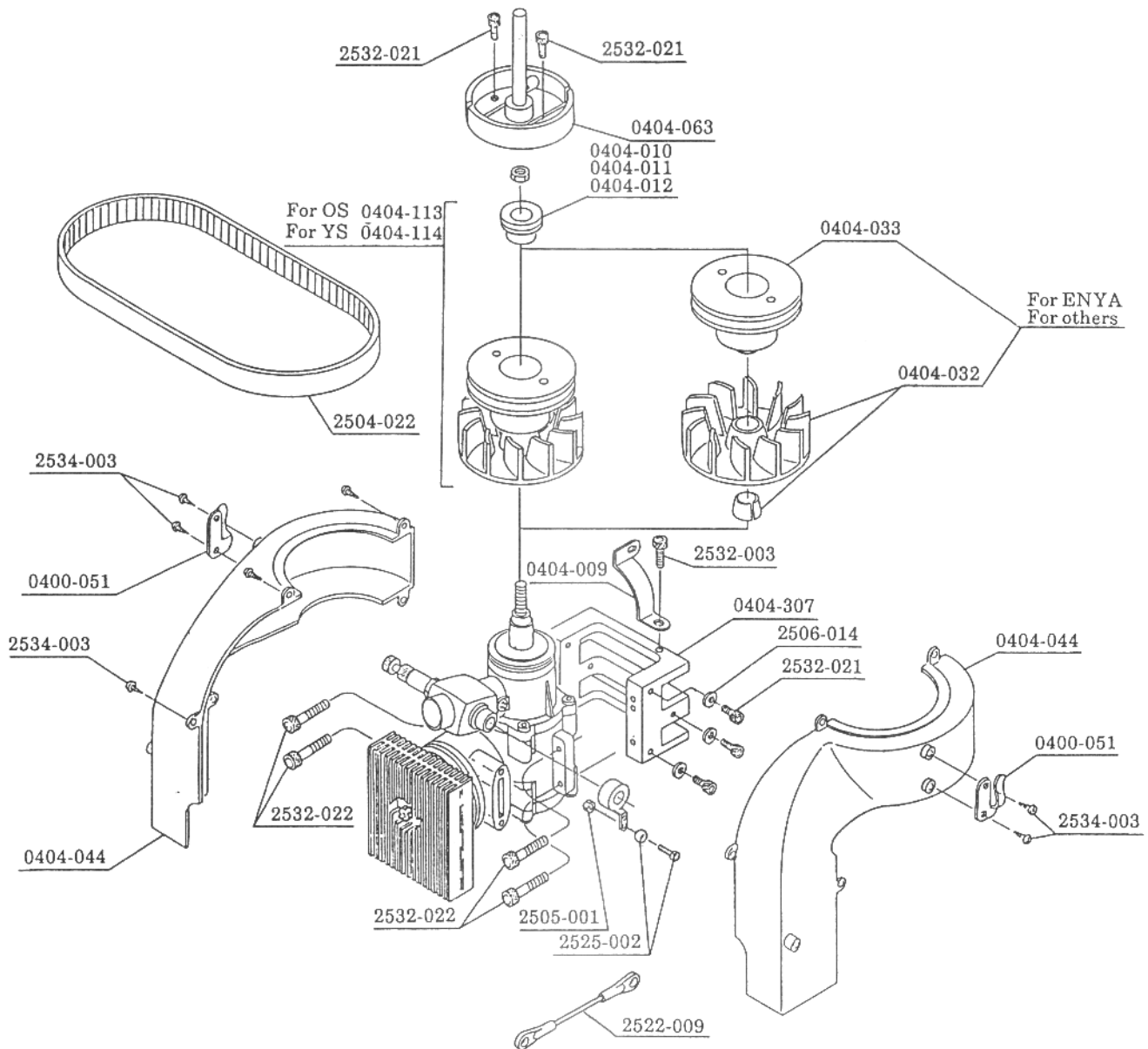
Code No.	Name of parts	Quantity	Japanese retail price (¥)	Remarks	φ10DDF	SSR	SSR-II	SSZ	FFZ
0401-002	Seesaw	1	2,200		◎	◎	◎		
0401-004	Stabilizer control arm	2	1,200		◎	◎	◎	◎	◎
0401-010	Blade holder	1	8,000	With drag metal	◎	◎	◎	◎	
0402-006	Damper rubber	4	400	Common with Shuttle			◎		
0403-081	Stabilizer bar	2	1,000		◎	◎	◎	◎	◎
0404-001	Mixing arm	1	1,500	With bearing	◎	◎	◎	◎	◎
0404-089	SSR feathering spindle	1	2,800			◎	◎	◎	
0404-207	Semi-symmetrical main blade with weight L = 655	1 set	4,500	Weight with reinforcement plate	○	○	◎	○	◎
0404-208	Stabilizer blade CG-W60-L105	2	1,600	With stabilizer cover film	○	○	◎	◎	◎
0404-216	Pitch arm P = 13	2	600	With M3×8 cap screw	○	○	◎	◎	◎
0404-221	Center hub SSR-II	1	4,000				◎		
0404-222	SSZ yoke side plate	2	4,000	Pressure fit damper outer collar			◎	◎	
0404-223	SSZ damper inner collar set	2	350				◎	◎	



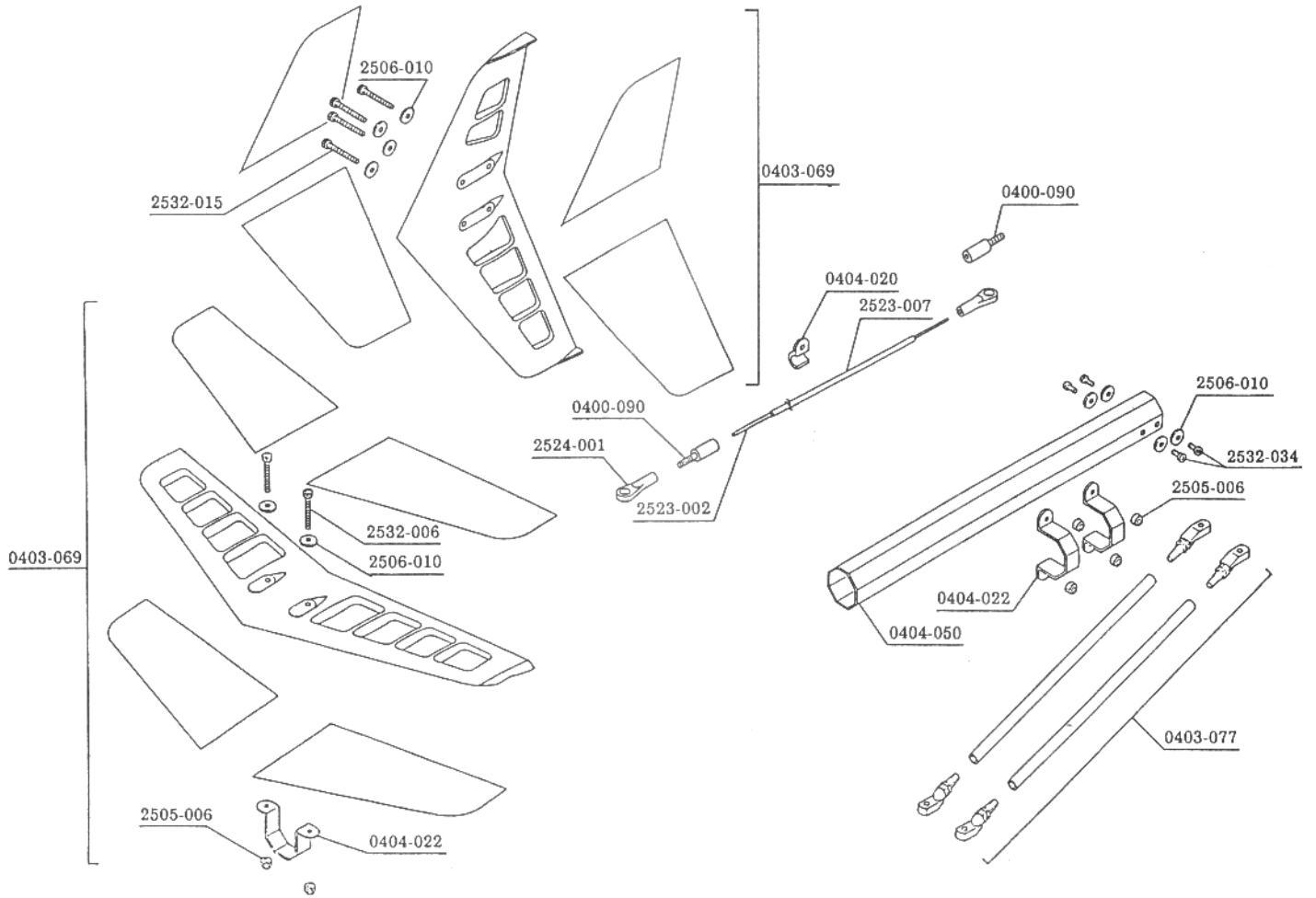
Code No.	Name of parts	Quantity	Japanese retail price (¥)	Remarks	DDF SST	SST-E	New SST-E	SST-C	BBZ-S
0400-004	Metal made clutch bell lining	2	200		○	○	○	○	
0400-014	Counter shaft	1	600		○	○	○		
0400-016	Miter gear (H) Left	1	1,500		○	○	○		
0400-017	Miter gear (AB) Right	1	1,500		○	○	○		
0400-113	Co-axial swash assembly	1 set	7,500	Pre-assembled	○	○	○	○	○
0403-010	Slide block set	1	1,000		△	○	○	○	○
0403-011	Mast lock	1	300		○	○	○	○	○
0403-017	Counter gear case	1 set	800	Common with R and L			○	○	○
0403-018	Counter gear 18T	1	1,300				○	○	○
0403-019	Timing pulley 9T	1 set	300	With flange			○	○	○
0403-047	Counter gear set (Belt type)	1 set	3,800				○	○	○
2511-010	Hexagon cross member L=26	2	400			○	○	○	○
0404-013	W type bearing holder φ19	1	1,500	2500-066 Bearing φ6×φ19×6ZZ 2500-049 Bearing φ10×φ19×5ZZ		○	○	○	
0404-014	Metal made bearing holder φ19	1	1,000	2500-049 Bearing φ10×φ19×5ZZ		○	○	○	○
0404-015	φ14 auto-rotation drive shaft	1	3,000			○	○		
0404-017	Counter gear 18T	1	2,200			○	○		
0404-023	Radius arm	2	300		○	○	○	○	○
0404-034	Clutch bell with gear	1	4,500	With bearing		○	○	○	
0404-035	Main gear for auto-rotation 97T	1	1,500			○	○		
0404-036	φ14 auto-rotation clutch set	1	10,000	Pre-assembled		○	○	△	△
0404-116	EX auto-rotation drive shaft	1	6,800			△	△		
0404-117	EX auto-rotation torque limiter	1	2,000			△	△		
0404-119	EX auto-rotation drive shaft set	1 set	8,000			○	○		
0404-227	Main mast L=185, 195	1	1,000	0404-037 is discontinued.		○	○		
0404-308	Counter gear case (R, L)	1 set	600				○		
0404-309	Counter joint shaft	1	900	Joint shaft with cover			○		
0404-310	Counter gear assembly	1 set	7,800	0404-018 is discontinued.		○	○		
0404-330	Metal made control arm	1	1,600		○	○	○	○	○



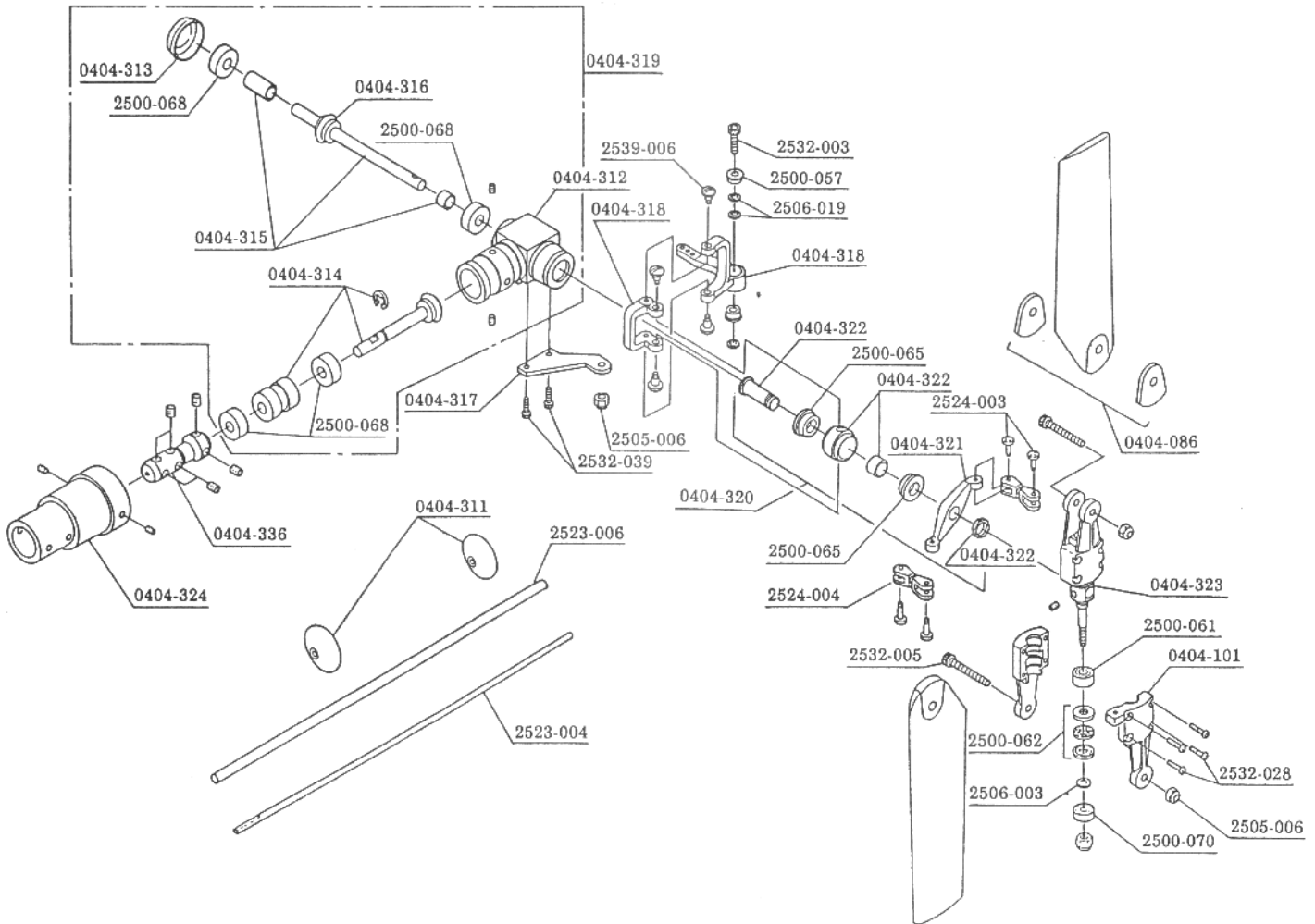
Code No.	Name of parts	Quantity	Japanese retail price (¥)	Remarks	DDF SST	SST-E	New SST-E	SST-C	BBZ-S
0403-048	Tail boom holder	1 for each	1,200	(R), (L)		○	○	○	○
2511-010	Hexagon cross member L = 26	2	400			○	○	○	○
0404-003	Front cross member block	1	1,500			○	○	○	
2511-007	Cross member M3×64	2	500			○	○	○	○
2511-003	Cross member M3×26	2	500			○	○	○	
2511-008	Cross member M3×69	2	500			○	○	○	
2511-004	Cross member M3×38	2	500			○	○	○	
0404-027	Skid pipe cap	4	300			○	○	○	○
0404-029	Servo mount (A)	1	800			○	○	○	
0404-111	Main frame (B) for large fuel tank	1 for each	4,000	(R), (L)		△	○	△	
0404-112	Large type fuel tank	1 set	1,900			△	○	△	
0404-206	Skid foot (Condor)	2	1,000			△	○	○	○
0404-302	Main frame (A)	1 for each	3,600	(R), (L)		△	○	△	
0404-303	Main frame (C)	1 for each	2,500	(R), (L)		△	○	△	
0404-304	Gyro mount	1	1,000			△	○	△	
0404-305	Servo mount (D)	2	1,200			△	○	△	
0404-306	Mechanical plate	1	1,200			○	○	○	
0404-333	Skid pipe (Black)	2	1,600			○	○	○	○



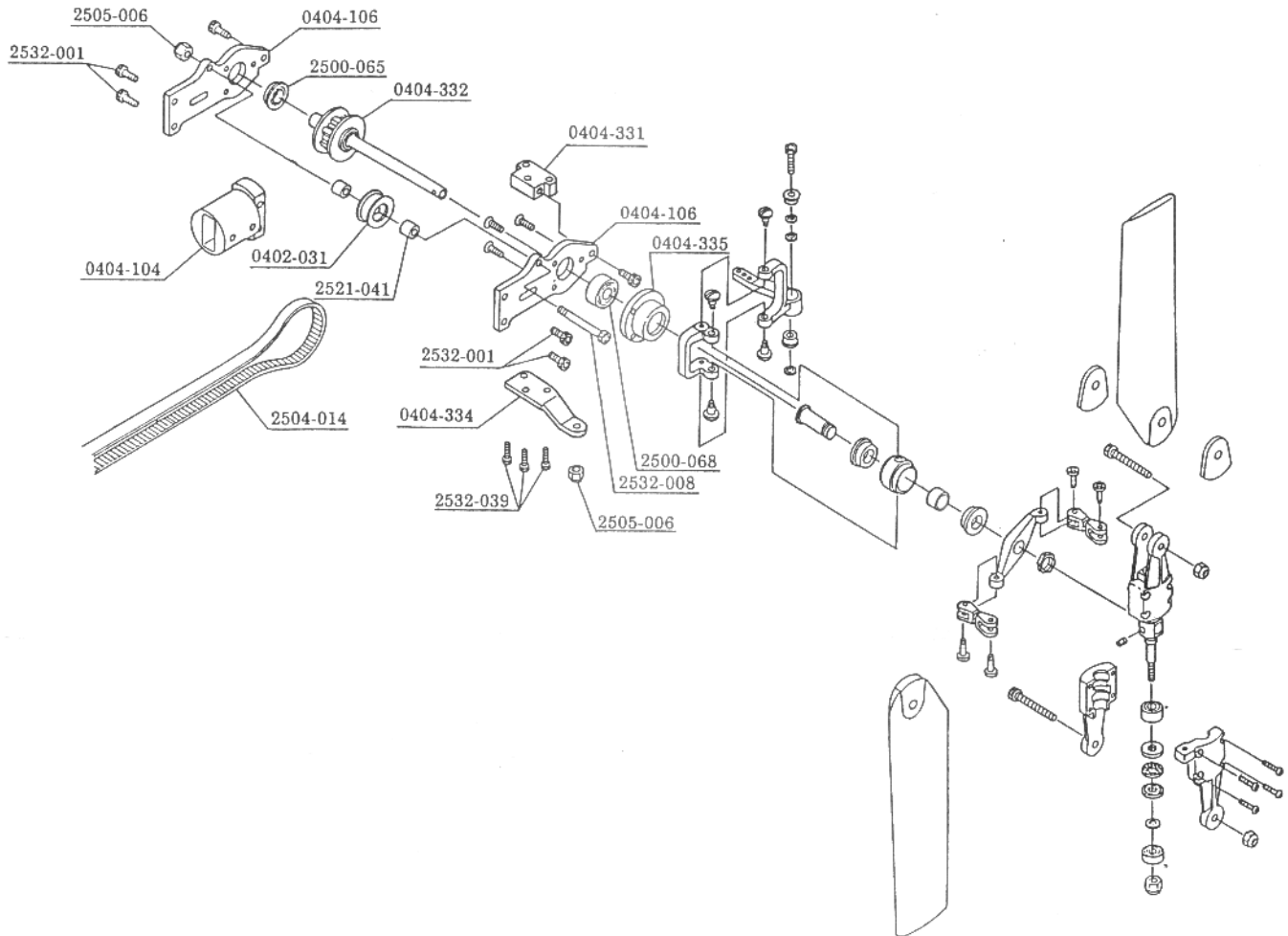
Code No.	Name of parts	Quantity	Japanese retail price (¥)	Remarks	DDF SST	SST-E	New SST-E	SST-C	BBZ-S
0400-051	Starting belt hook	1 for each	500	(R), (L)	○	○	○	○	
0404-009	Cooling cover setting bracket	1	300			○	○	○	
0404-010	Starter pulley washer For OS	1	300		○	○	○	○	
0404-011	Starter pulley washer For ENYA	1	300		○	○		○	
0404-012	Starter pulley washer For YS	1	300		○	○		○	
0404-032	Cooling fan set	1 set	2,000	With tapered spacer	○	○		○	
0404-033	Starter pulley	1	3,000		○	○		○	
0404-044	Divisional type cooling cover	1 for each	1,000	(R), (L)	○	○	○	○	
0404-063	Clutch shoe with shaft	1	3,000			○	○	○	
0404-113	EX starter pulley For OS	1 set	5,100	With washer		○	○	○	
0404-114	EX starter pulley For YS	1 set	5,100	With washer		○	○	○	
0404-307	Engine mount	1	2,500		○	○	○	○	



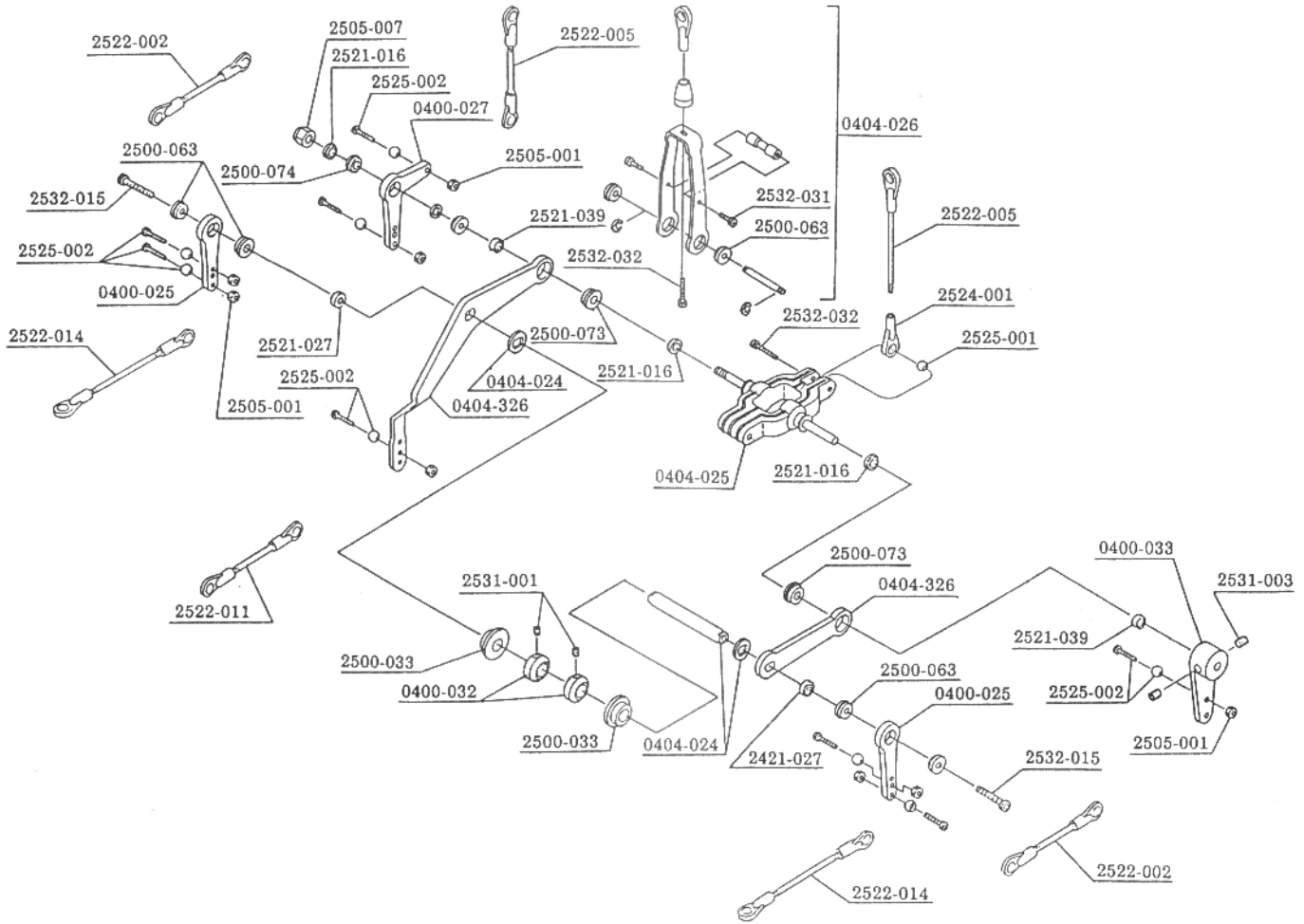
Code No.	Name of parts	Quantity	Japanese retail price (¥)	Remarks	DDF SST	SST-E	New SST-E	SST-C	BBZ-S
0400-090	Adjust joint (B)	5	500		○	○	○	○	
0403-069	Stabilizer set	1 set	1,500	With horizontal, vertical and seal		○	○	○	○
0403-077	Tail boom brace set	1 set	1,000	With terminal		○	○	○	○
0404-020	Pipe clamp bracket	2	250			○	○	○	○
0404-022	Pipe band	3	500			○	○	○	○
0404-050	Octagonal tail boom pipe L=735	1	1,600			○	○	○	
0404-329	Octagonal long tail boom pipe L=820	1	1,800	With collar for mounting the tail gear		△	△	△	



Code No.	Name of parts	Quantity	Japanese retail price (¥)	Remarks	DDF SST	SST-E	New SST-E	SST-C	BBZ-S
0404-086	Symmetrical tail blade L= 105	1 set	800	With reinforcement plate	△	△	◎	△	△
0404-101	EX tail blade holder	2 for each	300	(A), (B)		△	◎	△	△
0404-336	Tail joint φ2	1	700		○	○	◎		
0404-311	Tail drive guide	2	500			△	◎		
0404-312	Tail gear box	1	4,800				◎		
0404-313	Tail gear box cap	1	700				◎		
0404-314	Gear with shaft	1 set	2,500	φ5×13×16 collar With φ4 E ring			◎		
0404-315	Tail 2nd shaft	1 set	600	With collar roll pin			◎		
0404-316	φ5 miter gear	1 set	2,300	With roll pin			◎		
0404-317	Tail pitch lever stay	1	400				◎		
0404-318	Tail pitch lever set	1 for each	500	(A), (B)			◎		
0404-319	Tail gear assembly	1 set	13,000	Tail box, gear and shaft		△	◎	△	△
0404-320	Tail pitch plate set	1 set	2,800	With boss, slide shaft and bearing			◎		
0404-321	Tail pitch plate	1	200				◎		
0404-322	Tail pitch plate boss	1 set	1,200	With collar			◎		
0404-323	Tail housing	1	800				◎		
0404-324	Tail holder φ19	1	1,300				◎		



Code No.	Name of parts	Quantity	Japanese retail price (¥)	Remarks	DDF SST	SST-E	New SST-E	SST-C	BBZ-S
0402-031	Guide pulley (With bearing)	1 set	800	With bearing			○	○	○
0404-104	EX unit base (A)	1	3,200				○		
0404-106	EX unit plate	1 for each	2,200	(R), (L)			○		
0404-331	Tail unit base (B)	1	2,400				○		
0404-332	φ5 tail shaft	1	1,200	With 9T pulley			○		
0404-334	Tail unit stay	1	400				○		
0404-335	Bearing holder φ13	1 set	1,500	With M2×6×6 countersunk screw			○		
0404-107	EX unit holder	1	2,000	For body mounting and belt type					



Code No.	Name of parts	Quantity	Japanese retail price (¥)	Remarks	DDF SST	SST-E	New SST-E	SST-C	BBZ-S
0400-025	Metal made I-type lever φ3	1 set	1,800	With bearing	○	○	○		
0400-027	Metal made L-type lever φ4	1 set	2,200	With bearing	○	○	○		
0400-032	Shaft lock φ6	2	400	With screw	○	○	○		
0400-033	Elevator torque lever	1	600	With screw	○	○	○		
0404-024	Pitch lever shaft	1	400	With reinforcement washer		○	○		
0404-025	Elevator lever	1	1,200	With shaft		○	○		
0404-026	Elevator rod set	1 set	2,000	With bearing and link stand shaft		○	○		
0404-326	Collective pitch lever set	1 for each	800	(A), (B)		△	○	△	